



GLISS

**Meroni**<sup>®</sup>  
**serrature**

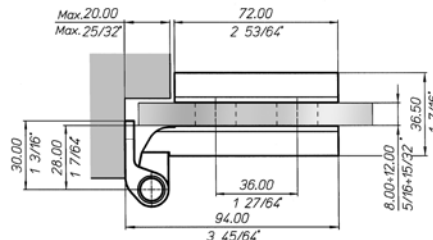
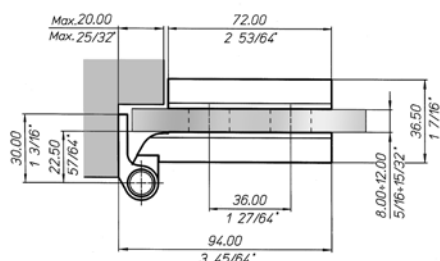
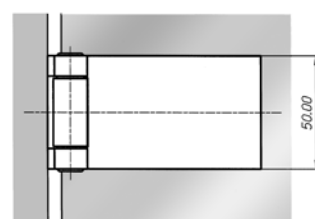
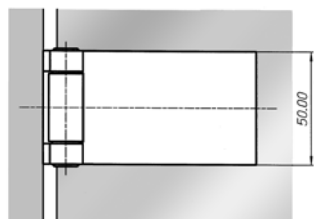
# VERSIONE STANDARD - STANDARD VERSION



**GAHA1ST6D** Braccio Normale  
Regular Arm



**GAHA1L6D** Braccio Lungo (+ mm 5,5)  
Long Arm (+ mm 5,5)



## Funzionamento

Rotazione 180°

## Spessore vetro

da 8 a 12 mm

## Peso porta

fino a 50 kg 2 cerniere  
da 50 a 70 kg 3 cerniere

## Larghezza porta

cm 90 max

## Regolazione finale montaggio

con bussole eccentriche mm 3

## Stipiti

da 30 a 46

## Distanza perno vetro

mm 22,5 (normale)  
mm 28 (lungo)

## Materiale

alluminio

## Operation

Rotating 180°

## Glass thickness

8 to 12 mm

## Door weight

up to 50 kg 2 hinges  
50 to 70 kg 3 hinges

## Door width

max 90 cm

## Assembly final adjustment

with eccentric bushes 3 mm

## Jambs

from 30 to 46

## Pin-glass distance

22,5 mm (regular)  
28 mm (long)

## Material

aluminium

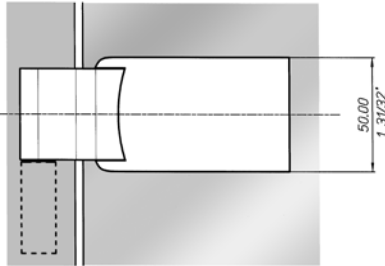
	Finiture Finishes	Braccio normale Regular arm	Braccio lungo Long arm	
NE	verniciato nero black coating	disponibile available	non disponibile not available	•
US15	nickel opaco matt nickel	a richiesta (min.300 pz) upon request (min.300 pcs)	non disponibile not available	•
US26	cromo lucido polish chrome	disponibile available	non disponibile not available	•
US26D	cromo opaco matt chrome	disponibile available	disponibile available	

• Prego contattare Meroni in caso di progetti speciali  
Please contact Meroni for special enquiries and quantities

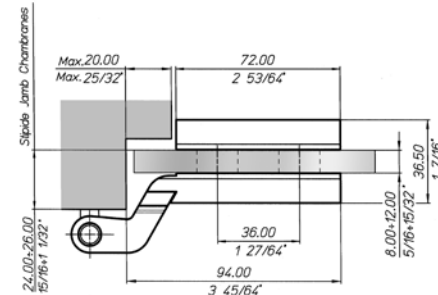
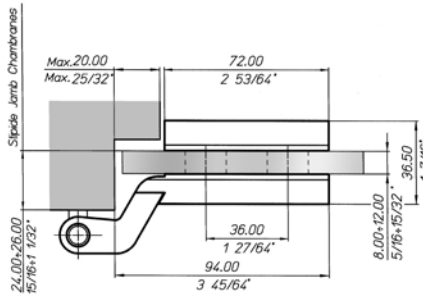
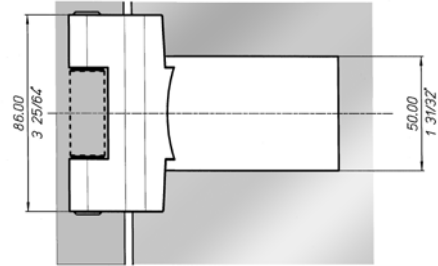
# VERSIONE TEDESCA - GERMAN VERSION



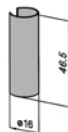
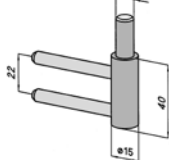
Perno singolo  
Single pin



Perno doppio  
Double pin

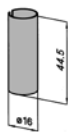
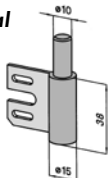


## Legno / Wood



GAHA1P1GCERL6D

## Metallo / Metal



GAHA1P1GCERM6D

## Funzionamento

Rotazione 180°

## Spessore vetro

da 8 a 12 mm

## Peso porta

fino a 50 kg 2 cerniere  
da 50 a 70 kg 3 cerniere

## Larghezza porta

cm 90 max

## Regolazione finale montaggio

con bussole eccentriche mm 3

## Stipiti

da 24 a 26 mm

## Materiale

alluminio

## Operation

Rotating 180°

## Glass thickness

8 to 12 mm

## Door weight

up to 50 kg 2 hinges  
50 to 70 kg 3 hinges

## Door width

max 90 cm

## Assembly final adjustment

with eccentric bushes 3 mm

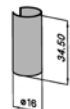
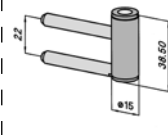
## Jamb

from 24 to 26 mm

## Material

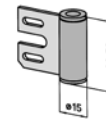
aluminium

## Legno / Wood



GAHA1P2GCERL6D

## Metallo / Metal



GAHA1P2GCERM6D

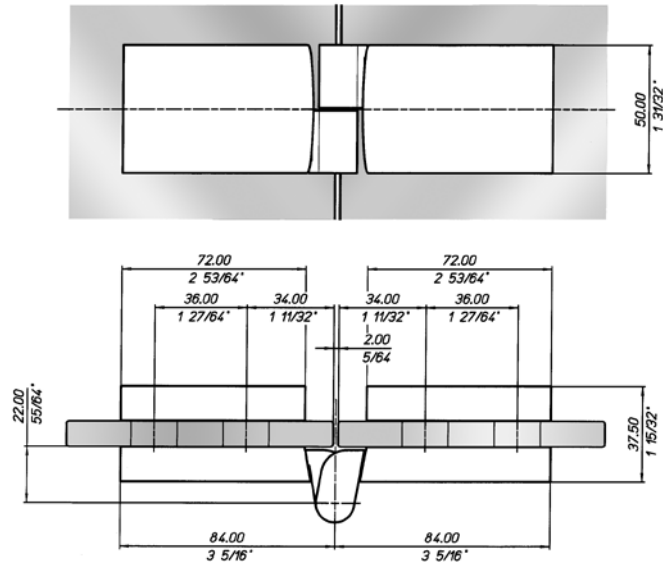
	Finiture Finishes	Perno singolo - Perno doppio Single pin - Double pin	
NE	verniciato nero black coating	non disponibile not available	•
US15	nickel opaco matt nickel	non disponibile not available	•
US26	cromo lucido polish chrome	non disponibile not available	•
US26D	cromo opaco matt chrome	disponibile available	

• Prego contattare Meroni in caso di progetti speciali  
Please contact Meroni for special enquiries and quantities

# VERSIONE VETRO-VETRO - GLASS TO GLASS VERSION



**GAHA1G16D** Vetro - Vetro  
Glass to Glass



Funzionamento	Operation
Rotazione 180°	Rotating 180°
Spessore vetro	Glass thickness
da 8 a 10 mm	8 to 10 mm
Peso porta	Door weight
40 kg max	max 40 kg
Larghezza porta	Door width
cm 80 max	max 80 cm
Regolazione finale montaggio	Assembly final adjustment
con bussole eccentriche 3 mm	with eccentric bushes 3 mm
Materiale	Material
alluminio	aluminium

	Finiture Finishes	Vetro - Vetro Glass to Glass	
NE	verniciato nero black coating	non disponibile not available	•
US15	nickel opaco matt nickel	non disponibile not available	•
US26	cromo lucido polish chrome	non disponibile not available	•
US26D	cromo opaco matt chrome	disponibile available on stock	
• Prego contattare Meroni in caso di progetti speciali Please contact Meroni for special enquiries and quantities			

## ELENCO FINITURE E CODICI FINISHES AND ITEM CODES INDEX

<b>VERSIONE STANDARD (braccio normale) / STANDARD VERSION (regular arm)</b>		
<b>Codice / Reference</b>	<b>Finiture</b>	<b>Finishes</b>
GAHA1STNE	verniciato nero	black coating
GAHA1ST15 (*)	nickel matt	matt nickel
GAHA1ST26	cromo lucido	polish chrome
GAHA1ST6D	cromo satinato	matt chrome
(*) min. 300 pz / min. 300 pcs		

<b>VERSIONE STANDARD (braccio lungo + 5,5 mm) / STANDARD VERSION (long arm + 5,5 mm)</b>		
<b>Codice / Reference</b>	<b>Finiture</b>	<b>Finish</b>
GAHA1L16D	cromo satinato	matt chrome

<b>VERSIONE TEDESCA (un perno) / GERMAN VERSION (single pin)</b>		
<b>Codice / Reference</b>	<b>Finiture</b>	<b>Finish</b>
GAHA1P16D	cromo satinato	matt chrome
GAHA1P1GCERL6D	cromo satinato	matt chrome
GAHA1P1GCERM6D	cromo satinato	matt chrome

<b>VERSIONE TEDESCA (due perni) / GERMAN VERSION (double pin)</b>		
<b>Codice / Reference</b>	<b>Finiture</b>	<b>Finish</b>
GAHA1P26D	cromo satinato	matt chrome
GAHA1P2GCERL6D	cromo satinato	matt chrome
GAHA1P2GCERM6D	cromo satinato	matt chrome

<b>VERSIONE VETRO - VETRO/ GLASS-TO GLASS VERSION</b>		
<b>Codice / Reference</b>	<b>Finiture</b>	<b>Finish</b>
GAHA1G16D	cromo satinato	matt chrome

**SERRATURE MERONI Spa**

via Valsorda snc, S.P. 40  
22044 Inverigo (CO) - Italy  
Tel. +39 031 6949301  
Fax.+39 031 698707  
E-mail: meroni@serme.it

**WWW.SERRATUREMERONI.IT**

